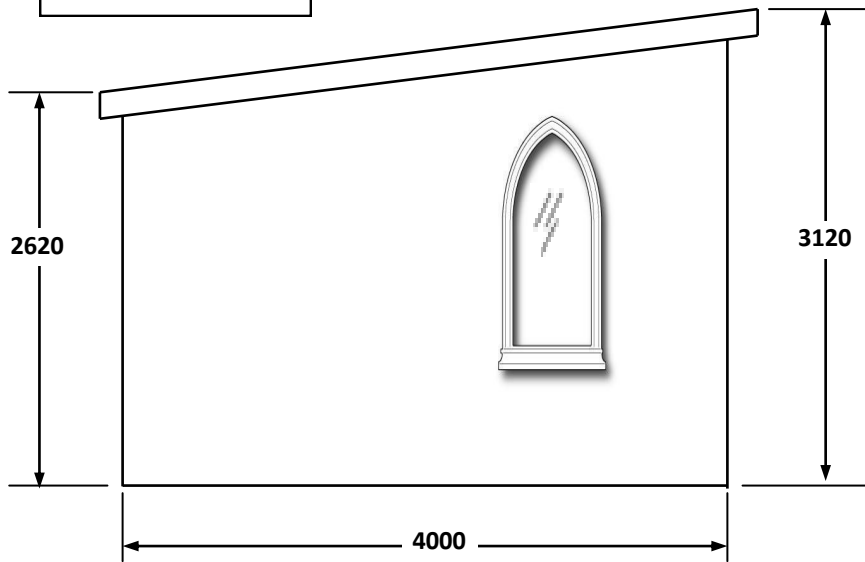


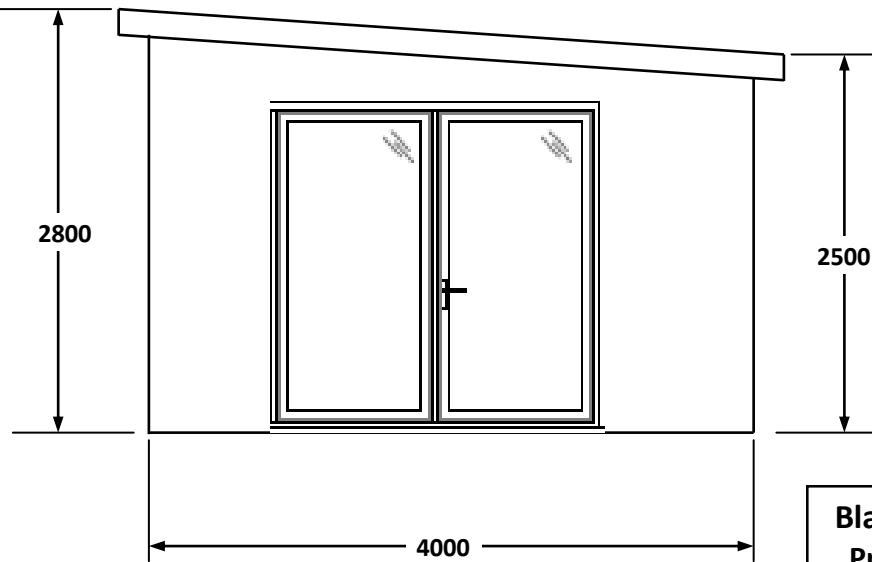
Aluminium framed 'Gothic Arch' style windows proposed to complement the view of the existing School Building

Position of Floor Step-Down to suit Ground Fall-away towards Park Street Approx 1:10

Front (South) Elevation
NB Rear Elevation no Windows



Side Elevation (from Park Street)



Side Elevation (from School)

Bladon CofE Primary School
Proposed Library Elevations
Drwg No: BL04/2 Feb 2020
Scale: 1:50 at A4